

**2008 31' EagleCraft  
12 Passenger Water Taxi / Tour Boat**



### Specifications

- **Overall Length:** 33'
- **Hull Length** 31'
- **Beam:** 11'
- **Side Plate** 1/4" 5086 Aluminum
- **Hull Plate** 1/4" 5086 Aluminum
- **Fuel :** 150 US Gal , 560 Liters, 130 Imp. Gal
- **Engine:** Single Volvo D6 330
- **Batteries:** Dual Starting
- **Trim Tabs:** Bennett Hydraulic
- **Helm Seat:** KAB Suspension
- **Electronics:** Ray Marine C120
- **GPS, Radar, Chart Plotter, Fish Finder**
- **VHF Radio:** Icom 504
- **Transport Canada Certified -**
- **Under 5 Gross Tons**
- **12' Aft Leaning Cabin**
- **Head Compartment c/w Vanity Sink**
- **Mercury 25 hp kicker on bracket**
- **Aft deck storage compartments**
- **Transom door to swim grid**
- **Shore power**
- **Volvo 2nd station controls on aft deck**
- **Windlass**
- **36" high railings**
- **Washdown pump**
- **12 Passenger Seating**
- **Remote Spotlight**
- **Docking Lights**
- **Heater & Defroster System**
- **Windshield Washer System**
- **Cruise Speed with 12 Passengers 26 Knots**

**Sale Price: \$199,900.00**

## **Daigle Welding & Marine Ltd.**

**2177 Island Hwy.  
Campbell River B.C.**

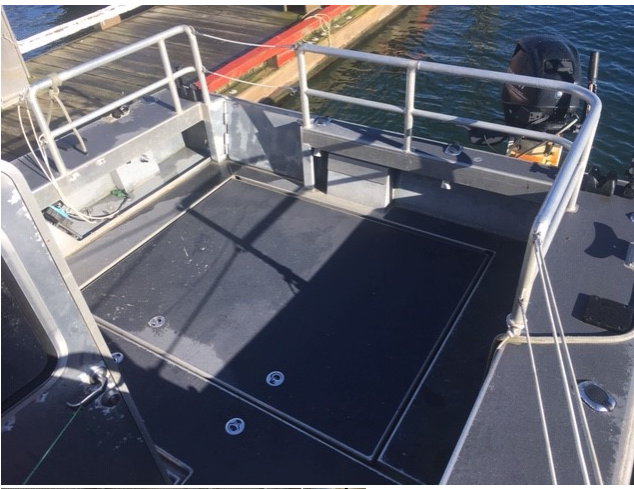
**Web Site:** [www.eaglecraft.bc.ca](http://www.eaglecraft.bc.ca)

**Phone:** (250) 286-6749

**Email:** [torry@eaglecraft.bc.ca](mailto:torry@eaglecraft.bc.ca)

**Fax:** (250) 286-6847

**Toll Free:** 1-888-393-6464



- *Options Included with Package*
- *12' Aft Leaning Cabin*
- *Head Compartment c/w Vanity Sink*
- *Mercury 25 hp kicker on bracket*
- *Aft deck storage compartments*
- *Transom door to swim grid*
- *Shore power*
- *Volvo 2nd station controls on aft deck*
- *Windlass*
- *36" high railings*
- *Washdown pump*
- *12 Passenger Seating*
- *Remote Spotlight*
- *Docking Lights*
- *Heater & Defroster System*
- *Windshield Washer System*
- *Cruise Speed with 12 Passengers 27 Knots*



**Daigle Welding & Marine Ltd.**  
**2177 Island Hwy.**  
**Campbell River B.C.**

**Web Site: [www.eaglecraft.bc.ca](http://www.eaglecraft.bc.ca) Email: [torry@eaglecraft.bc.ca](mailto:torry@eaglecraft.bc.ca)**  
**Phone: (250) 286-6749 Fax: (250) 286-6847**  
**Toll Free: 1-888-393-6464**